

# Oceanside Transit Center Redevelopment

Transit and Mobility – Part 2. Mar. 16, 2023



*Toll Brothers*  
APARTMENT LIVING

**NORTH COUNTY  
TRANSIT DISTRICT**



## Transit & Mobility - Part 2

### March 16, 2023



### Meeting Format:

Transit & Mobility - Part 1 review

Project overview

Feedback summary

Review of project modifications and mobility elements

Next steps

Q & A

# Revitalizing the Oceanside Transit Center

The redevelopment of the OTC is an opportunity to create a welcoming and engaging community gathering place, with a mix of shops and dining options that fit the community character.

## Planning Goals

- Support local, regional and statewide goals for reducing Californians' reliance on single-occupancy vehicles by improving public transit offerings.
- Redevelop an underutilized site to provide affordable housing and create jobs.
- Increase the efficiency of operations of the existing Oceanside Transit Center.
- Align with the City of Oceanside's vision to "focus on creating vibrant, walkable, visually attractive and engaging mixed-use communities centered along Coast Highway and the major east-west commercial corridors, around Sprinter Stations, and in the Downtown District."  
*Onward Oceanside, General Plan Update Draft Vision Statement*
- Create pedestrian-friendly connections that welcome visitors, commuters, and existing neighbors to new shops and social gathering places.



# Community Context

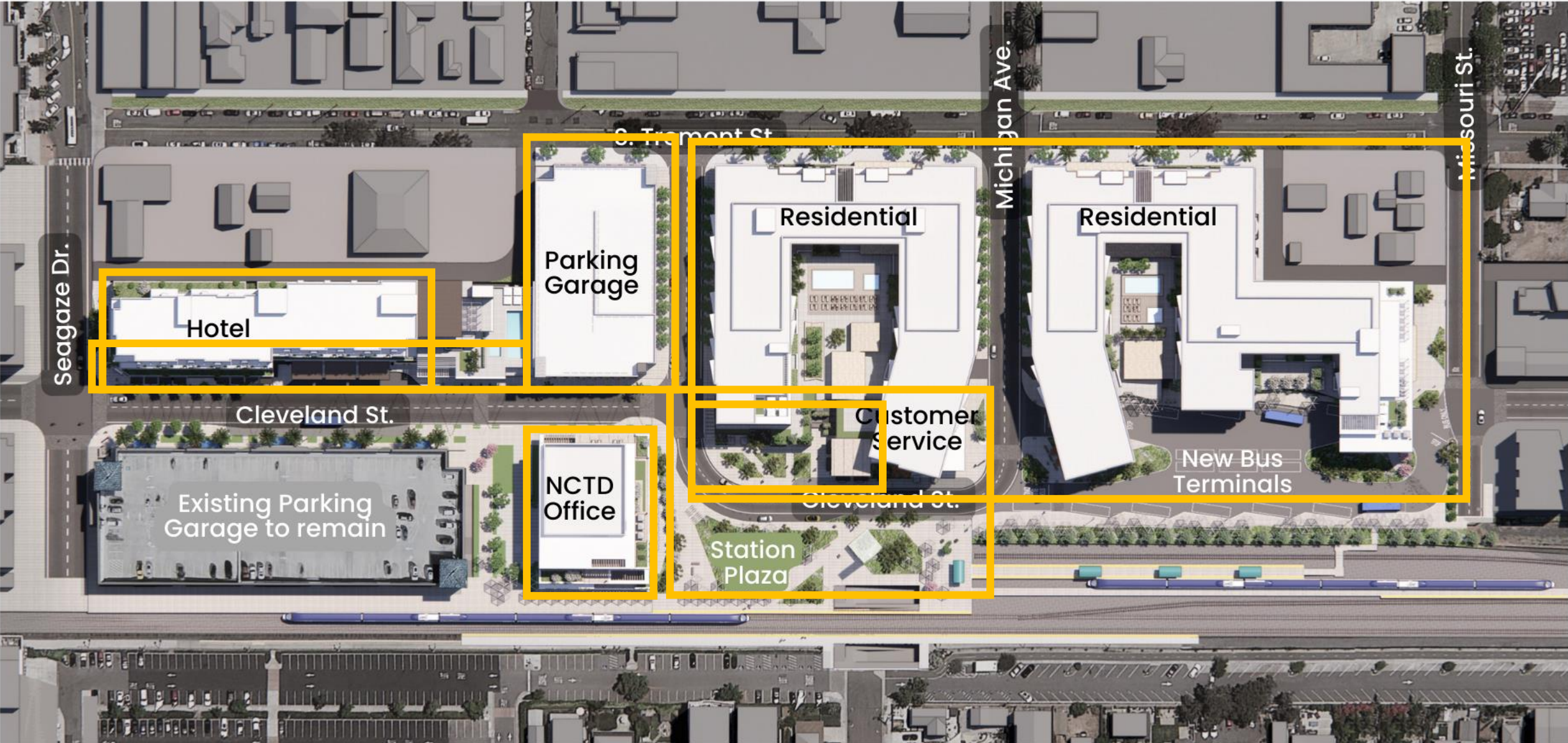
The project is based on a thorough review of the site constraints and opportunities, and mindful of the surrounding uses.



Existing Condition: OTC at 235 S. Tremont



# Oceanside Transit Center Project Overview



# Project Milestones

In 2016, the NCTD Board of Directors adopted a policy that would pursue development of some of its real estate holdings. The redevelopments are intended to reduce automobile reliance, increase transit ridership, and create jobs and affordable housing.



Email Outreach@OsideTransit.com

 CEQA Environmental Review

 Opportunity for public comment

# Community Responsive Planning



## **What we've heard:**

Sense of arrival for the Transit Center

Easy multi-modal navigation and circulation

Mobility elements to support active transportation

Parking management

Integration of community input

NOTE: Feedback included is specific to Transit & Mobility

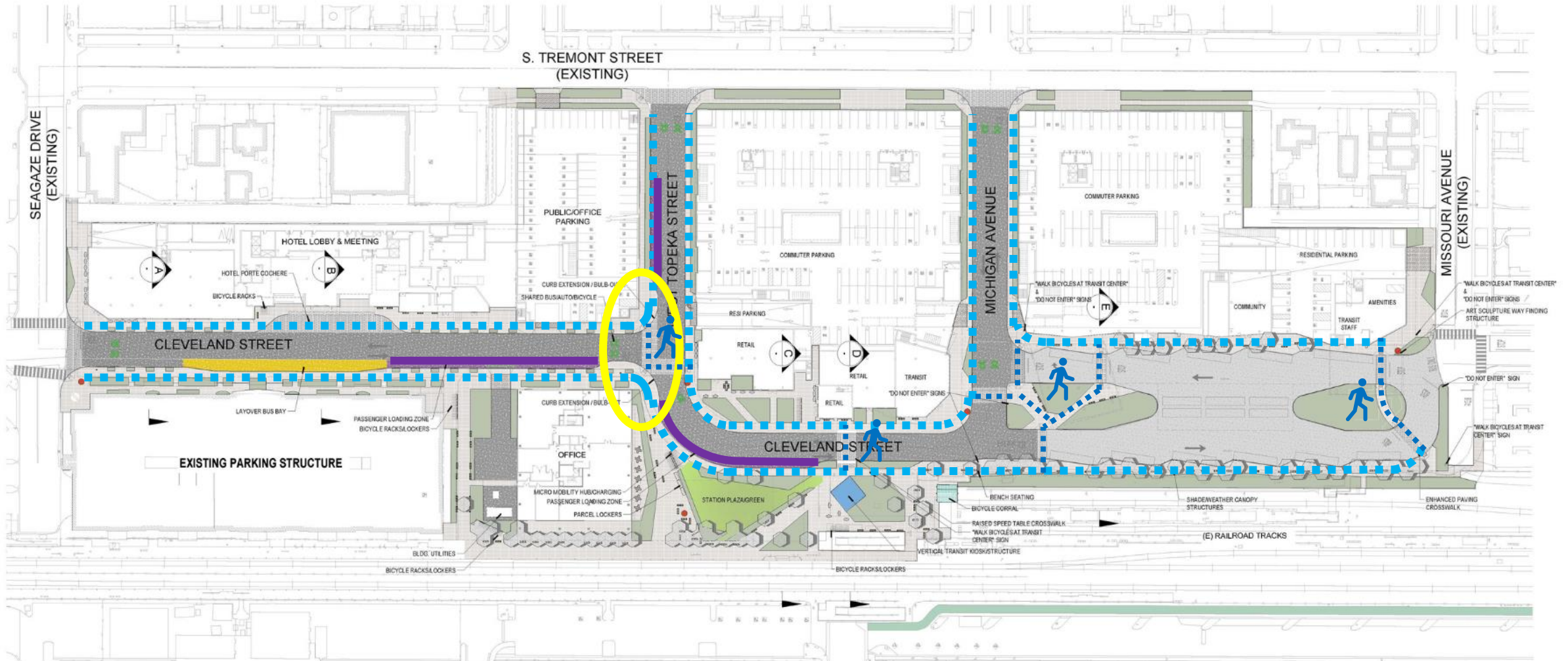
# Improved Pedestrian Circulation

## Goals Met:

Easy multi-modal navigation and circulation  
Mobility elements to support active transportation

## Project Modifications:

- Wider sidewalks



## Community Responsive Planning



9/15/22

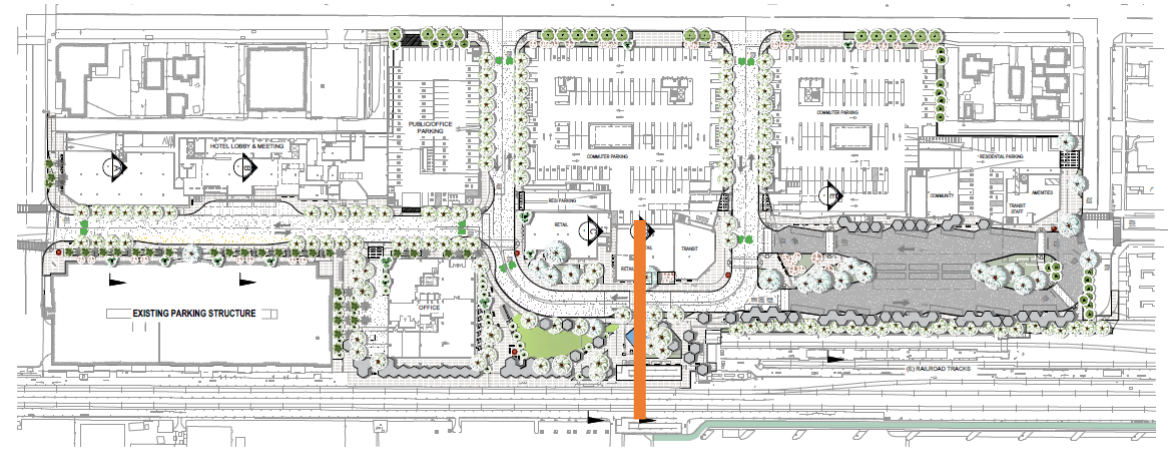


STATION PLAZA AND DROP-OFF AREA

3/16/23



STATION PLAZA AND DROP-OFF AREA



KEY MAP  
SCALE: 1=100'-0"



STREET SECTION -D  
SCALE: 1=10'-0"

# Enhanced Transit Experience

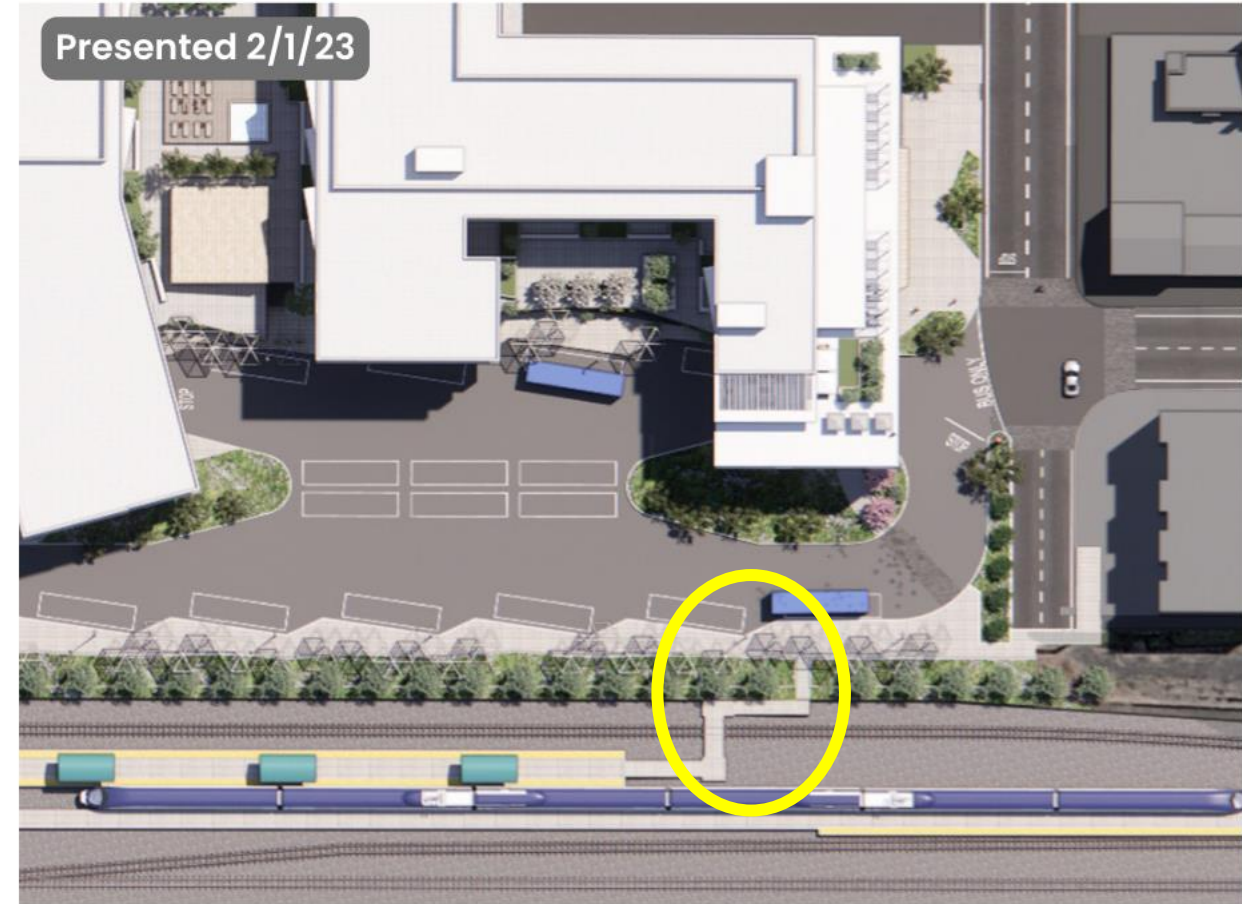


## Goals Met:

Easy multi-modal navigation and circulation  
Sense of arrival

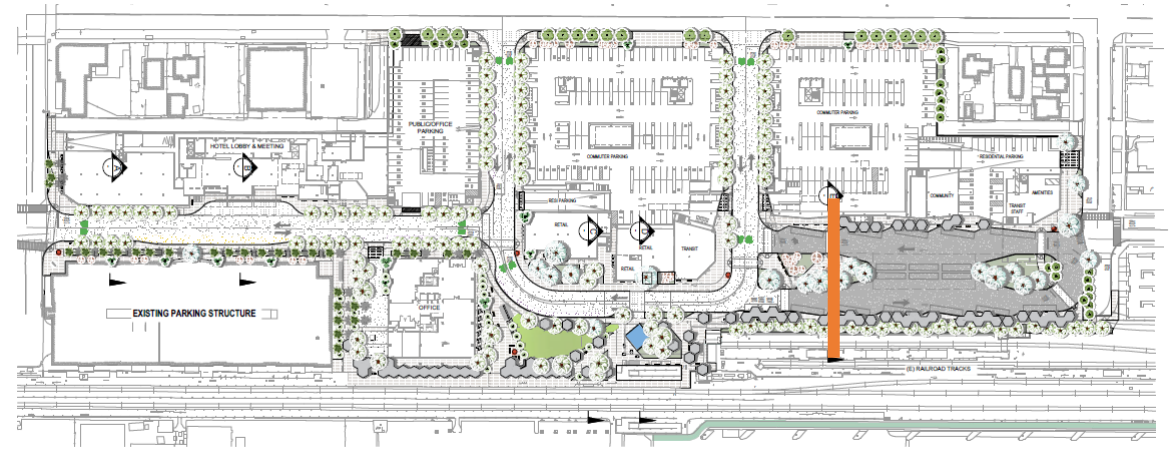
## Project Modifications:

- Wider sidewalks
- Dedicated pick up/drop off zones
- Enhanced crossings
- Traffic calming elements

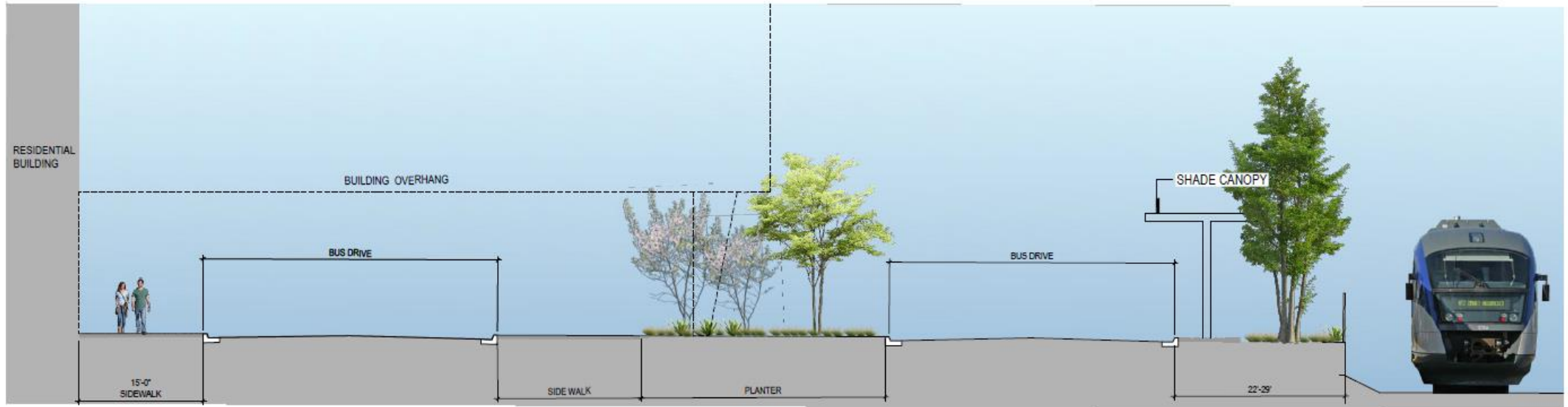


Best practices in the transit industry provide for a clear line of site between rail and bus areas, between all bus boarding platforms, and from the COASTER central control/security office to all the transit boarding areas.”

## Community Responsive Planning



KEY MAP  
SCALE: 1=100'-0"



STREET SECTION -E  
SCALE: 1=10'-0"

# Enhanced Transit Experience



**Goals Met:**  
Mobility elements to support active transportation  
Sense of arrival



## Project Features:

- Improved connectivity to train platforms
- Clear visibility to all modes
- Landscaped Station Plaza

## In Process:

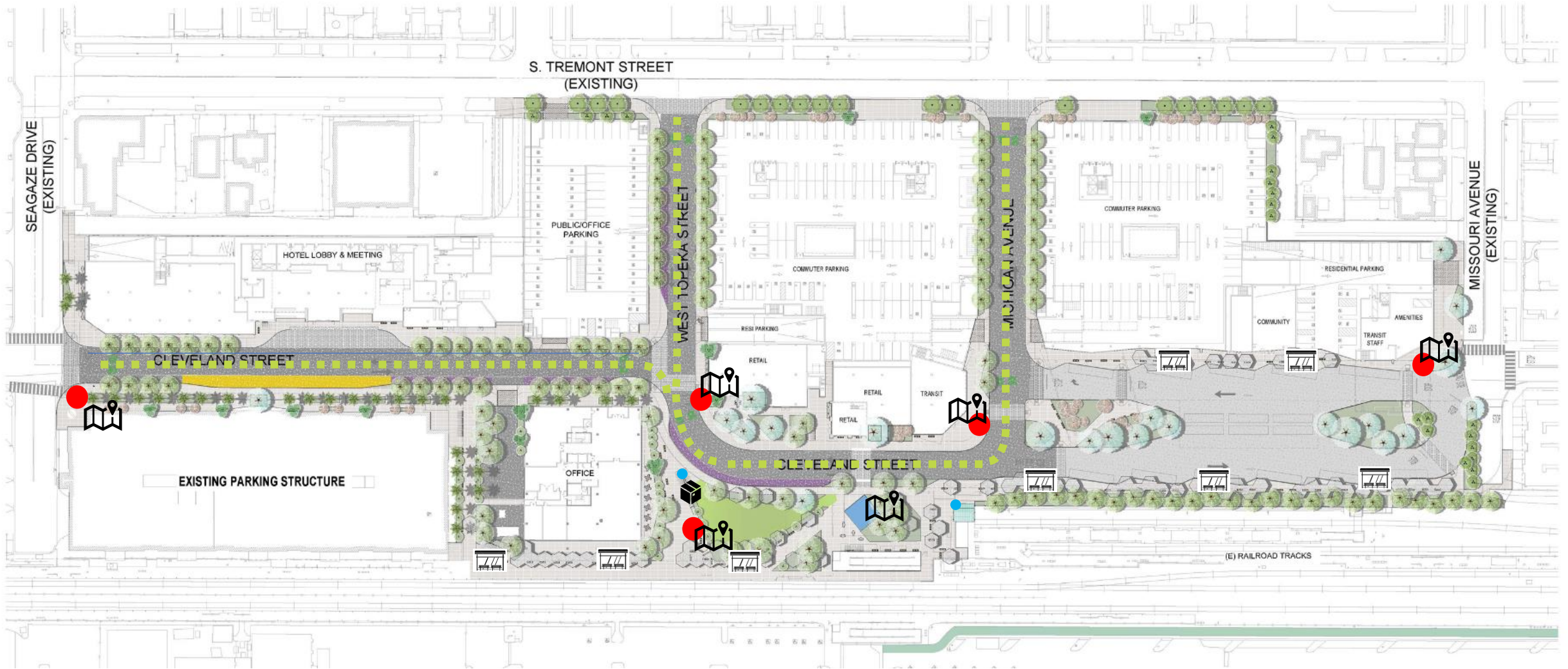
Exploring potential to relocate Customer Service center



# Community Responsive Planning





# Mobility Elements

**Goals Met:**  
Mobility elements to support active transportation  
Easy multi-modal navigation and circulation



 Potential Art Location  
 Wayfinding

 Package Delivery  
 Drinking Fountain/Bottle Filling Station

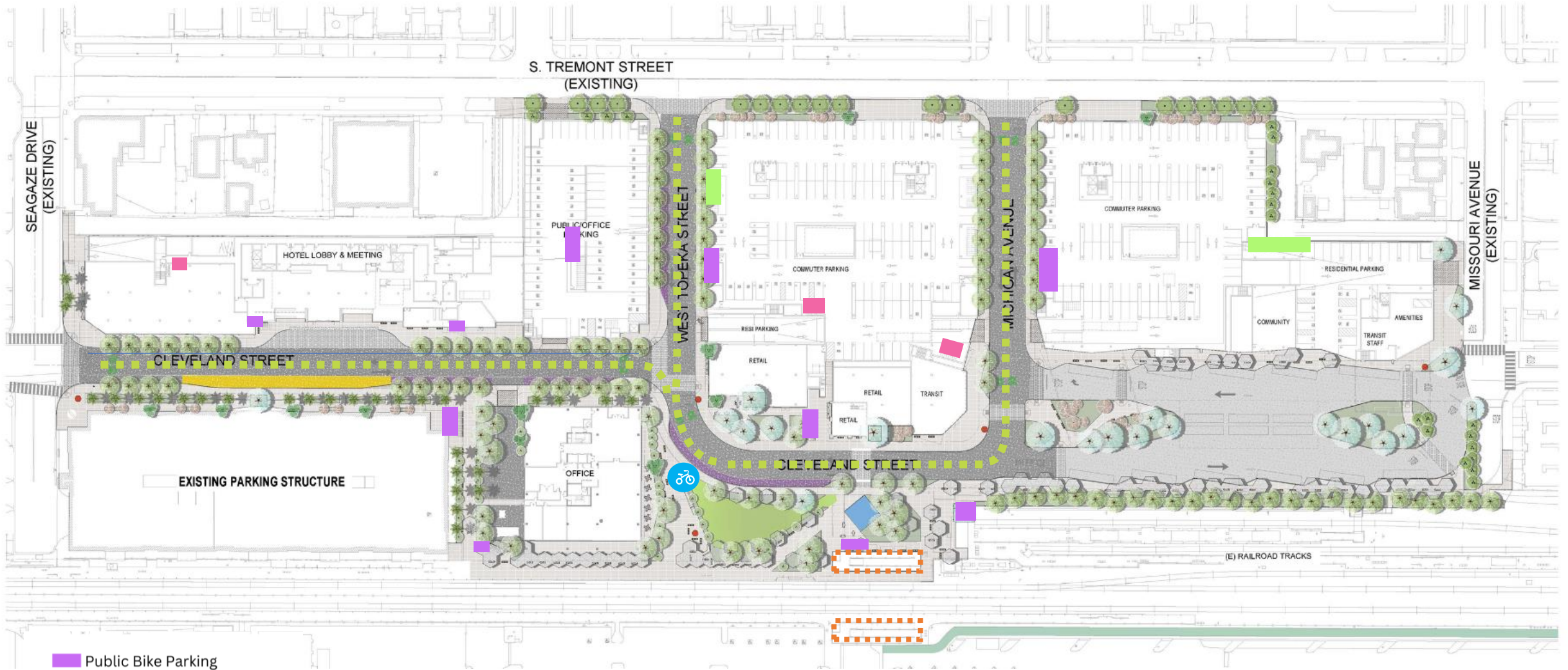
 Enhanced Transit Waiting

 Shared Bus/Auto/Bicycle



# Mobility Elements

**Goals Met:**  
Mobility elements to support active transportation  
Easy multi-modal navigation and circulation

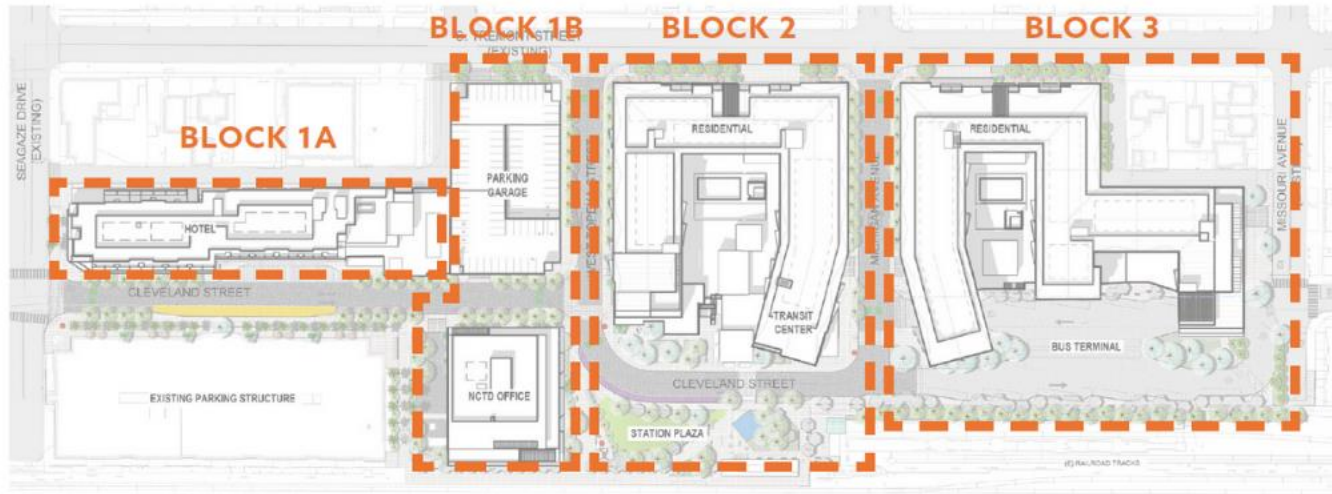


- Public Bike Parking
- Hotel and Retail Bike Parking
- Resident Bike Parking
- Bike Share
- Existing Under Crossing
- Existing Rail Trail
- Shared Bus/Auto/Bicycle

# Parking

Goal of reducing reliance on single-occupancy vehicles by improving public transit offerings

- Providing 1,771 parking spaces to satisfy city requirements
  - Replaces existing parking
  - Additional parking to accommodate proposed uses
- Community Feedback:
  - Implement a parking management program for the public parking garage
  - Incentivize residents that don't have a car/don't need parking
  - Don't want new residences taking up already limited street parking
  - Don't include public parking in the residential buildings



# Summary and Next Steps



- Creates a vibrant and engaging hub that draws people in, increases ridership and improves efficiency.
- Incorporates mobility elements that encourage alternative modes of transportation.
- Responds to community feedback through project modifications. Additional modifications are still being studied.
- Exploring additional project modifications related to the centralized customer service area and public parking
- Next Thematic Meeting: Aesthetics (4/26)
- Public Circulation of DEIR (Early Summer)